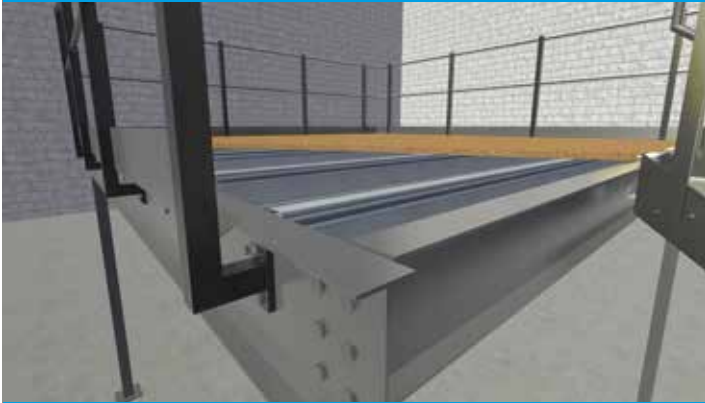


PRODUCT COMPARISON



STANDARD



MEZZANINE7

Whether you need a standard mezzanine floor for storage or functional space, or an enhanced floor solution that integrates with material handling systems and machinery, our experienced team will deliver a bespoke solution to meet your needs.

STANDARD MEZZANINE SYSTEM

Standard steel mezzanine systems are designed for fast installation and are the most cost-effective solution to increase your floor space. They are highly versatile and capable of being used in almost any business environment.

- Robotic and AGV compatibility
- 600 Kg load capacity
- Lightweight construction
- Standard deflection

MEZZANINE7® SYSTEM

Mezzanine7 System is the ultimate solution providing seven times more strength than standard mezzanine systems. This patented solution future-proofs your structure to meet the evolving needs of your business.

- Robotic and AGV compatibility
- 5,000 Kg load capacity
- Heavyweight construction
- 75% less deflection
- Reduced frequency
- Increased light reflectivity
- Class "0" fire resistance